

# The Gold Pan

November 2023 Issue

## The Newsletter of the Comstock Gold Prospectors

### INSIDE

Presidents Letter  
2024 Club Elections  
Varnum Column  
Guest Speaker  
Outings  
Classifieds  
Meeting Agenda  
Board of  
Directors/Appointees  
Ballot



### Next Meeting

**November 28,  
2023**

All members  
Welcome

### President's Letter

*“Gold medals aren't really made of gold. They are made of sweat, determination and a hard- to-- find alloy called guts”-Dan Gable*

A busy year is wrapping up. Our Club had a very successful year as per membership, outings and happy prospectors. Next year looks to be even better for us...if only the world would settle down!

Cynthia Farnham passed away last month. Wayne and Cynthia are the owners of the Downieville claims that they have graciously leased to the Club. We have enjoyed these claims immensely and these are also the claims that were available at the Downieville Gold Rush Days which added to the success of the event. Our thoughts and prayers are with Wayne now and in the future...

This is the month that we have our Club elections. A ballot is enclosed with the nominations for the positions and a space where you can write in your choice. The Presidents position will have two nominations.. Keith Wilson and Jim Richards(incumbent). Gary, George, Rachelle and Ed will

---

stay on for another term which leaves us with an unfilled position of Member-at-Large. If you want involvement on the board, feel free to write your name on the ballot! Also consider volunteering for a Club a position next year helping at one of upcoming events.

We will also be taking a vote to proceed with Rick locating a new claim for us. This will mean \$750 to proceed. The board is in favor of this. The cost of a claim when found and accepted is WAY cheaper than purchasing an existing claim. He has years of experience and volumes of documentation. We are paying for his expertise and research which could be well worth it. Jeff has been in to touch with him and he and Dave Perkins give him “thumbs up”.

Stanley Paher will be our speaker this month and he will have his wonderful books available for sale with his valuable signing...just in time for the holidays!!!Speaking of speakers, with the new year coming, we have nothing lined up. We need your help in this regard. We would also like someone to step up and kind of honcho this???

Thanks to Gary our claims are in good shape going forward. Remember we will need assessment forms when you are out and about...the sooner the better! Be sure and display your CGP placard in your window for recognition and also for county mounties as they will know why you are parked there. Also be sure and let someone know where you are and better yet use the “buddy” system...those rocks can be slippery and a knock on the head may be all it takes. Would be nice to have someone around to drag you out!

Christmas party the 12<sup>th</sup> of December. Set up at 5pm, sit down at 6:30. Guy guy gifts and gal gal gifts around \$10 r so. We will have door prize drawings. We will provide the “big” stuff; turkey, ham, lobster tails, filet mignon or whatever...We will have a sign-up sheet for the salads, appetizers, deserts, etc. We are thinking of having a raffle for our Keene 151 dry washer which the Club bought years ago and was never used. It is worth about \$2,500?. We will bring this up at our Nov meeting as for the disposition of it. We could offer for sale to our members, auction it, or put in the Christmas raffle for \$20, \$50 tickets? We need your thoughts and input. We are trying to empty our trailer where all this stuff is residing.

Happy Thanksgiving and have a MERRY, MERRY Christmas!

-Jim

---

Oh one more thing...Josh Reinke (Editor of the ICMJ) has asked us if we could submit articles to be published in the ICMJ. Any volunteers to have your expertise or research published? More to follow.

## Club Elections

Please see the ballot enclosed to cast your vote! We have 2 candidates running for president. First candidate was “Nominated” by Jim Richards himself. Keith Wilson! Keith has been currently doing a vast amount of volunteer work for the club, he currently does Member-at-Large and has been an asset to each and every one of us in the club! Then of course Jim Richards himself. Gary Hagstrom running to continue his current position of Vice President. George has (*generously*) offered the club another term, Rachelle and Ed have also agreed to volunteer for another term which leaves us with an unfilled position of Member-at-Large. If you want involvement on the board, feel free to write your name on the ballot!

Don't be shy! Feel welcome to be apart of the club and volunteer for a once a year, once a month or even a board position. There are so many ways you can be apart of the Comstock Gold Prospectors!

\*\*\* *“Volunteering is the ultimate exercise in democracy. You vote in elections once a year, but when you volunteer, you vote every day about the kind of community you want to live in”* \*\*\*

---

# Tidbits From Daniel Varnum

---

THE HUMAN RACE IS IN DANGER FROM  
MOTHER EARTH

D.W.Webb Varnum

On Television and the news there are discussions about the end of mankind , one way is Yellow Stone. There are 12 super volcanoes in the world two of them are in he United States

If any one of these did a complete emptying of it's lava chamber, it would mean the end of the modern world as we know it.

The dust cloud would last five to seven years Most plant life would succumb, this would end many types of animal too. Then human life would be next , with much violence and suffering.

One of these super volcanoes is in our back yard.

We go there to play.

It is at Mammoth Lake and it's name is The long Valley Caldera.

This Caldera is known as California's Yellowstone.

Why is it here? Because we live near the edge of a tectonic plate, The Continual Plate, and the Pacific

Plate . The Pacific Plate is being force down and under causing great heat.

Some comparison:

	L. Valley	Y. Stone	MT. ST. Helen
last event	76000yr ago	640000yr ago	42yr ago
Size	20X11 mi	35X34 mi	1.2X1.9 mi
Depth	3000 ft	several K ft	2084 ft
Ejection	140 cu mi.	240 cu mi.	. 29 cu mi.
dust cloud	8 mi.	?	6 - 8 mi

There are other Volcano in The Ring of Fire along the west coasts of the U.S.A., Mt Lassen, erupted

in 1914,1921, and 2014. also the giant Mt Rainier active last year. 2021, and Crater Lake.

It seams that Long Valley is Waking Up! How do we know? There is a increase in geothermal activity. There is new smoke venting and Carbon

Dioxide venting, killing trees. Worse yet the CO2 is heaver than air and flows down hill and can fill valleys kill all animal life including human. Map 2

More alarming is the resurgent dome near Bishop.

It is pushing up noticeably the last few years. In 2018 the Long Valley deformation was measured by the earth magnetic field. Proving a large magma chamber estimated to contain 290 cu mile of melt. This is a indication that there is a large amount of liquid below the surface. Map 2 &

Another sign is earth quakes , after a period of relative calm the last 20 years the swarms have increased. The amplitude of these quakes are usually of a magitude1 to 1.2, at a depth of 1Km to 23Km .

.#4

In the area there is several other points of interest.

At Mono Lake , in the lake, there are two volcano cones, first is Negit Island erupted 300 years ago, it is intrusive rhyolite dome. The second is Paoha island ,a intrusive basaltic dome. This eruption was 13300 years ago also one to the south Mono Crater.

Other danger of a volcanic eruption, Beside dust, there is lava temperature up to close to 2000 deg.

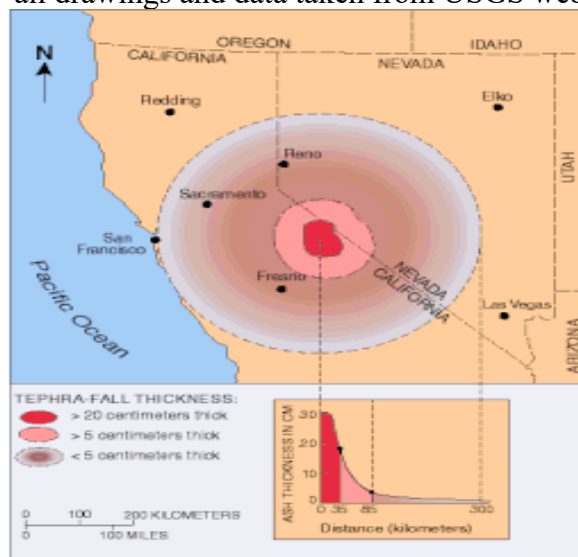
Pyroclastic flows dust to 800 deg and speeds to 500mph,. With snow covered volcanoes the danger can include Lahars , this a flow of water and ash that will cover everything, it is similar to a giant mud flood it will destroy everything in it's path .

“Here is how the USGS puts it:In creased volcanic activity, in Long Valley area since 1980, increases the chance of an eruption occurring in the near future, bud scientists still lack adequate data to reliably calculate by how much. Volcanic unrest in some other large volcanic systems has persisted for decades even centuries without leading to an eruption. But since volcanic unrest can escalate to an eruption quickly – in a few days, or less- USGS scientists are monitoring the activity closely”

Is there anything we can do , can we prepare?

NO. Just hope long in the future.

all drawings and data taken from USGS web sites

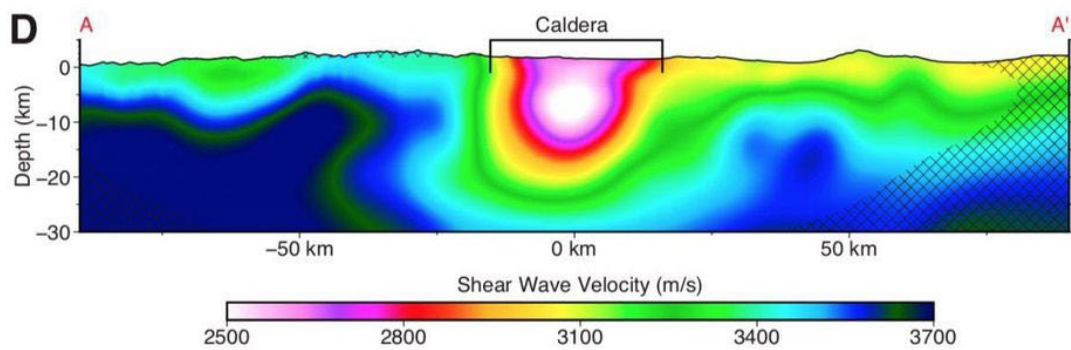
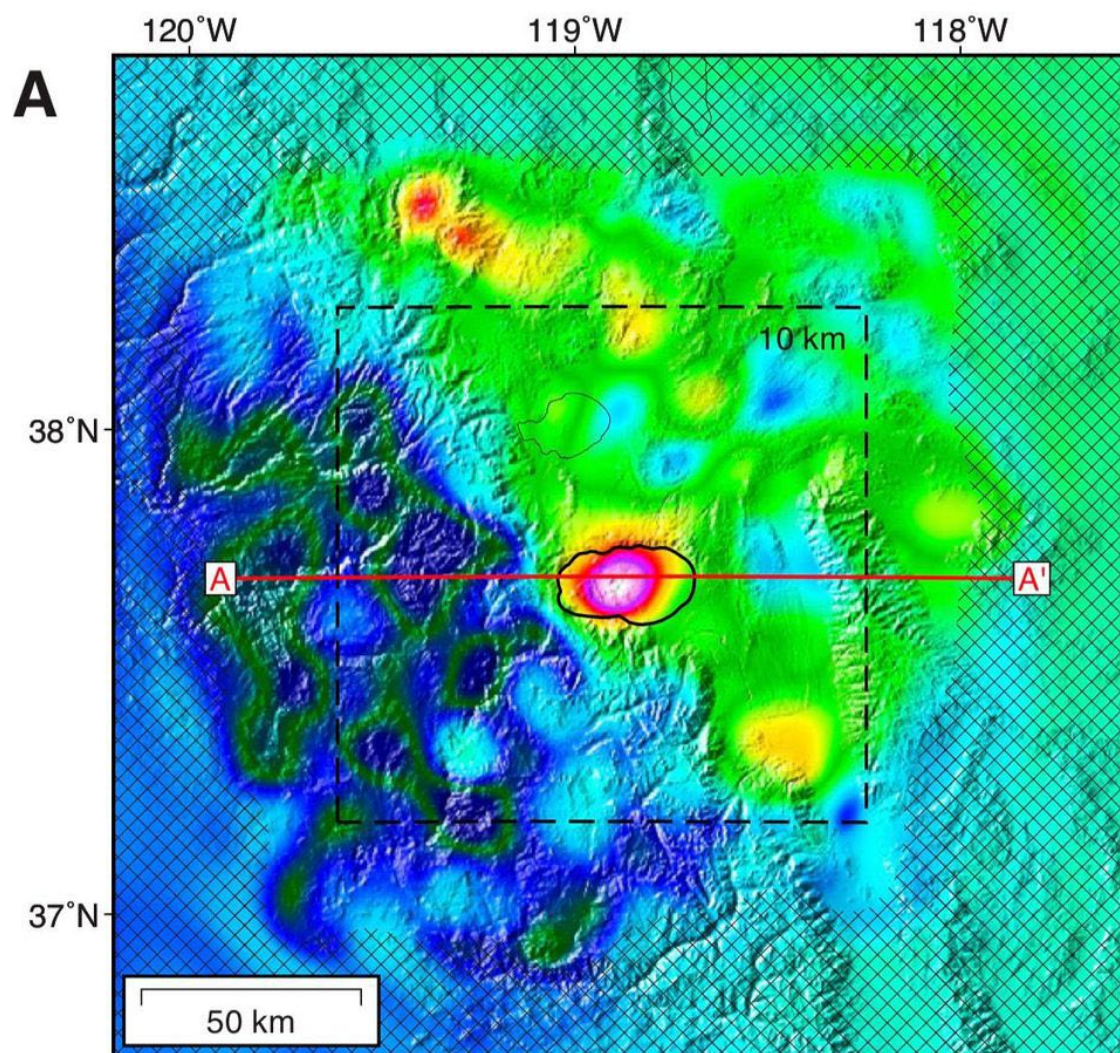


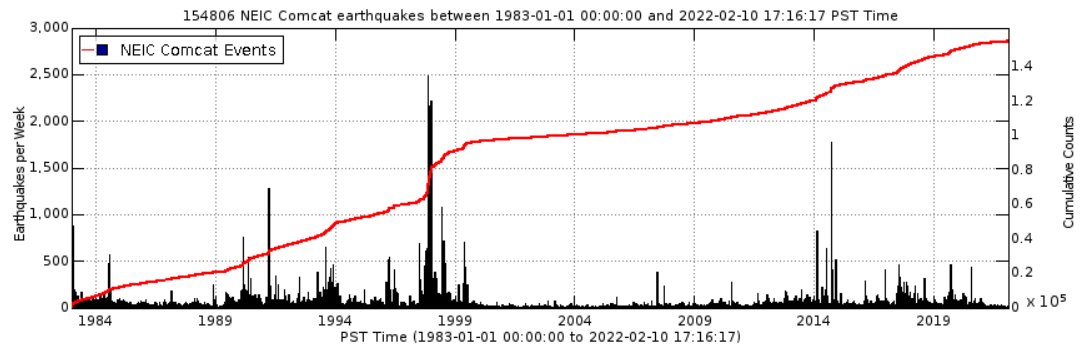
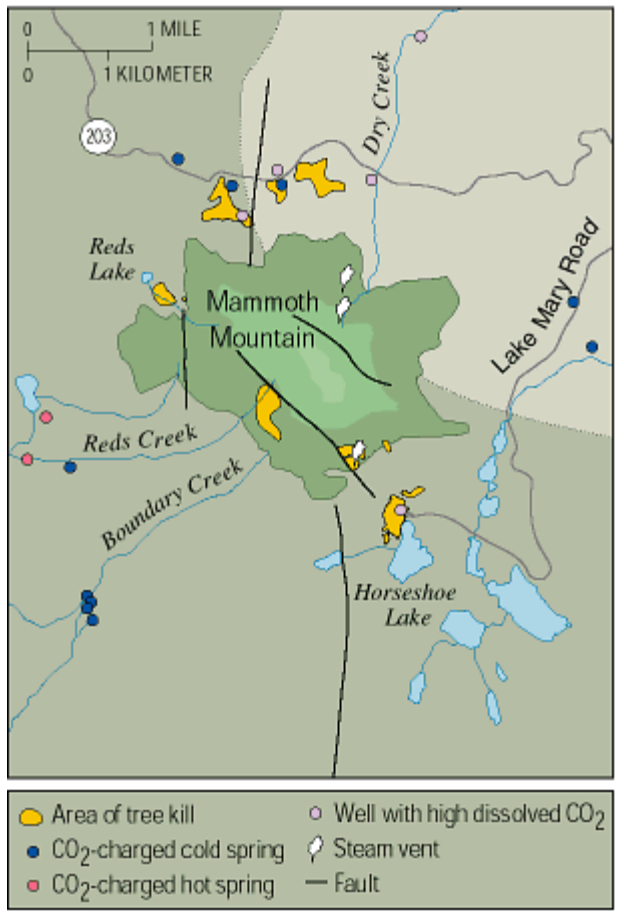
# MAPPED: THE WORLD'S MOST POWERFUL VOCANOES

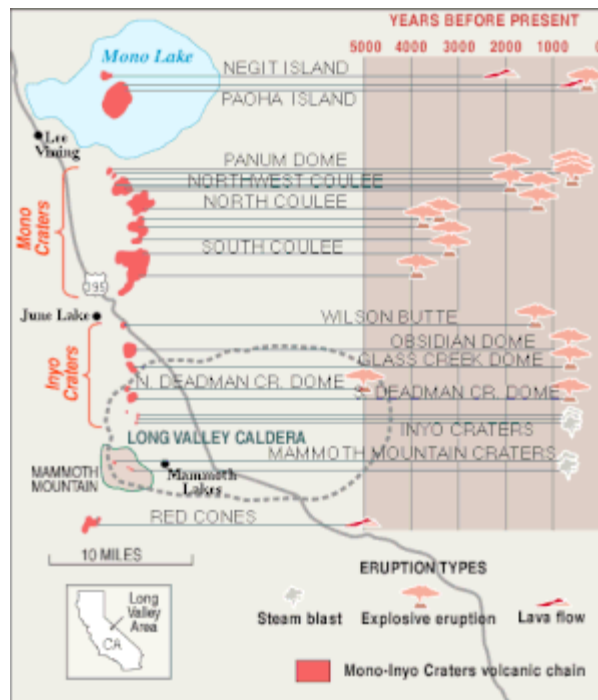


- 1 YELLOWSTONE, USA
- 2 LONG VALLEY CALDERA, USA
- 3 VALUES CALDERA, USA
- 4 LAKE TOBA, INDONESIA
- 5 TAUPO, NEW ZEALAND
- 6 AIRA CALDERA, JAPAN
- 7 LA GARITA CALDERA, USA
- 8 THE CAMPI FLEGREI, ITALY
- 9 MOUNT TAMBORA, INDONESIA
- 10 BAEKDU MOUNTAIN  
NORTH KOREA/CHINA
- 11 KURILE LAKE, RUSSIA
- 12 KARYMSHINA, RUSSIA
- 13 BENNETT LAKE CANADA
- 14 CERRO GALAN, ARGENTINA
- 15 PACANA CALDERA, CHILE
- 16 PASTOS GRANDES , BOLIVIA
- 17 MOUNT IO, JAPAN
- 18 KYUSHU, JAPAN



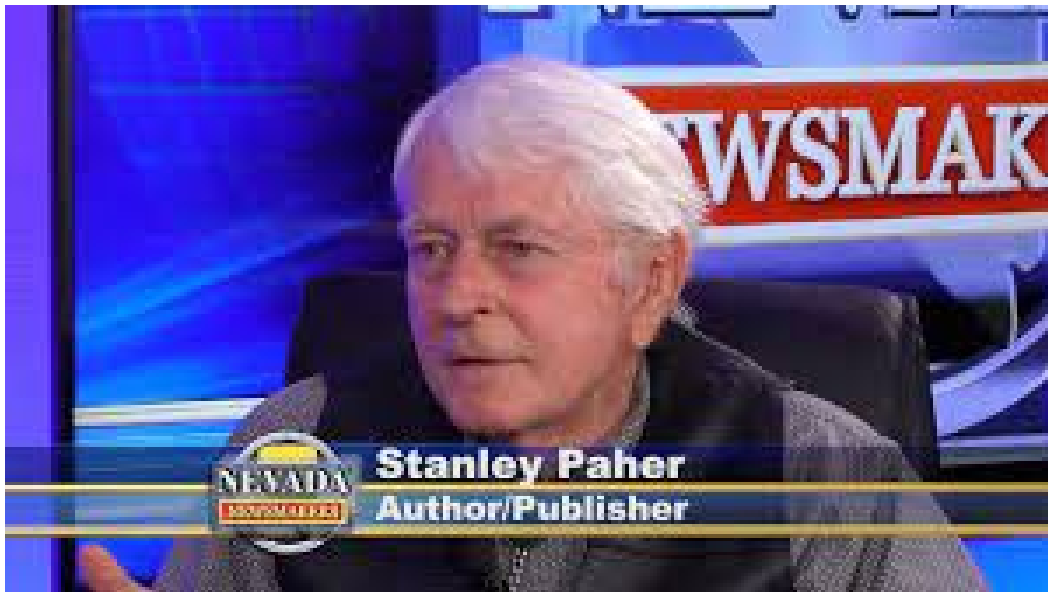






### Guest Speaker

Stanley Paher will be our speaker this month and he will have his wonderful books available for sale with his valuable signing...just in time for the holidays!



If you have someone you know or you are interested in being a guest speaker for the club, please reach out so we can add to the schedule.

.....

---

## Outings

# Annual Christmas Party

December 12<sup>th</sup> starts at 6:30

Gift Exchange \$10

We will have door prize drawings.

We will provide the Main dish!

We will have a sign-up sheet for the salads, appetizers, deserts.



[This Photo](#) by Unknown Author is licensed under [CC BY-ND](#)

**The Club no longer offers Equipment Rentals**

---

Due to nearly no demand at all, the club no longer offers equipment rental.

## **Classifieds**

### **Minelab Monster Metal Detector**

\$700

If interested, Please contact:

Patty Halas: 904.806.1780

### **NORTH FORK YUBA RIVER CLAIM**

**17acres+/- Easy access with offroad parking.**

1mile east of Downieville . Upstream from "The Lure". Downstream from "KVB" claim.

Beautiful bedrock and gravel

\$5000

**Contact: Ray Ryba 760.807.1774**

### **20 ACRE PLACER CLAIM**

#### **SHASTA RIVER**

Unpatented 20 acre placer claim on BLM land, 15 miles from Yreka, CA. Includes 1/3 mile of year-round river. Gold rich placers in streambed, gravel benches and a long bar created by a 150° river bend. Lode gold found historically in canyon walls above claim. Former Union Mine at top of 900 ft canyon above claim produced & shipped a \$51,000 bullion shipment Jan10, 1918 (1918 dollars - see Mindat). That's more than \$5 million at today's prices. Although located in a steep canyon, you can drive your pickup as close as 15 yards to the water with an easy hike to the river bank. Several campsites within 2 miles of claim. Asking \$9,995. Contact Steve (775) 742-3336.

---

## **General Meeting Agenda:**

October 2023

Meeting Called to order: 7:30pm by: President Jim Richards

Correction to minutes: No Corrections

### **Membership Report:**

Total Members: 332

New Member:

184 Individual/ 147 Family

### **Claims Report:**

Claims Committee Meeting: Meets Monday at 11:30am Denny's / Reach out to VP Gary Hagstrom for questions.

### **Old Business:**

### **New Business:**

Outings and Events

### **Outings Report:**

Christmas Party

## Board of Directors-2023

Postion:	Name	Phone Number	Email Address
President	Jim Richards	775.225.2494	President@cgpgold.org
Vice President	Gary Hagstrom	775.409.4996	VP@cgpgold.org
Secretary	Rachelle Wolf	775.846.8372	rachelle.neilsen@gmail.com
Treasurer	George Eglinger	775.722.8554	Treasurer@cgpgold.org
Membership/Chairperson	Jeffery Benik	775.250.4188	membership@cgpgold.org
Member At Large	Ed Cranch	760.221.4748	AtLarge2@cgpgold.org
Member at Large	Keith Wilson	775.450.5723	AtLarge1@cgpgold.org

## Appointees

Position	Name	Phone Number	Email Address
Christmas Party Chairperson	OPEN	OPEN	OPEN
Claims/Chairperson	Gary Hagstrom	775.409.4996	Claims@cgpgold.org
Clothing Custodian	Hamilton Reed	775.841.1294	Clothing@cgpgold.org
Equipment Custodian	Grant Garrison	775.359.9238	Equipment@cgpgold.org
Facebook Admin	Jim Brothers	928.278.8555	jimmywbrothers@gmail.com
Gold Pan Editor	Rachelle Wolf	775.846.8372	GoldPan@cgpgold.org
Historian	OPEN	OPEN	OPEN
Outings Chairperson	Patty Halas	904.806.1780	Outings@cgpgold.org
Raffle Custodian	Keith Wilson	775.450.5723	Raffle@cgpgold.org
Sergant of Arms	Jeffery Benik	775.250.4188	
Web Administrator	Julie Zamacona	707.758.5297	jamazama@comcast.net
Webmaster	Jim Brothers		<a href="mailto:jimmywbrothers@gmail.com">jimmywbrothers@gmail.com</a>

**Please reach out to the board if you are interested in Volunteering!**

**\*\*All "Gold Pan" submissions are due 2<sup>nd</sup> Monday of the month\*\***

# 2024 Comstock Gold Prospectors Ballot

Running Offices	Candidate	Candidate	Your VOTE
President	<b>Keith Wilson</b>	<b>Jim Richards</b>	
Vice Present	<b>Gary Hagstrom</b>		
Treasury	<b>George Eslinger</b>		
Secretary	<b>Rachelle Wolf</b>		
Membership/Chairperson	<b>Jeffery Benik</b>		
Member at Large	<b>Ed Cranch</b>		
Member at Large	<b>Your Nomination</b>		