

Post GPS Data (NAD27 Datum)

(Zone 11 T)

Post	UTM-EAST	UTM-North
NW	328854	4473789
N1*	328971	4473784
N2*	329056	4473785
NW1	329255	4473780
DISC	329260	4473981
NE	330061	4473962
SE	330049	4473359
SW	328845	4473387

* - N1 and N2 mark boundary with neighbor in immediate area where access road is.

Emergency Medical

Pershing General Hospital
855 6th St
Lovelock NV
775-273-2621

Directions From Reno

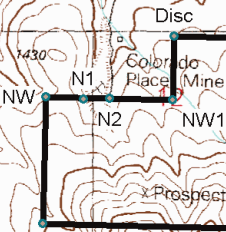
From Nixon bridge go 43.7 miles North on state route 447 to mile marker #59.
Turn right onto improved dirt road (119-20-00W, 40-26-03N). Mileage from here.

1st gate ... 4.4 miles (119-15-53W, 40-26-07N)
2nd gate ... 5.6 miles (119-15-21W, 40-26-42N)
3rd gate ... 6.4 miles (119-15-03W, 40-27-02N) (turn right into gate and left after gate).
Stay right at interesection (119-15-9W, 40-28-26N)
Left turn at 15.6 miles (119-07-10W, 40-28-18N)
Right turn at 15.8 miles (119-07-09W, 40-28-30N)
At 23.5 miles turn right onto unimproved dirt road (118-59-30W, 40-25-50N)
At 26.5 miles you are there (119-00-53W, 40-23-55N)
Drive up the hill past the club claim markers and prospect from there.

Notes:

1. If gates are open, leave them open. If gates are closed, close them after passing.
2. There is more than one way to get to this claim. See the Blue Wing Map for another route. You can also get to claims through Lovelock.
3. All GPS() data in these directions are WGS84 Datum (d-m-s.ss).

Tammy Map Issue #2



General Information

1. Mining Claim NMC920209
 2. Dry desert camping and prospecting
 3. Two wheel drive vehicles ok
 4. Twin Buttes Well 71/2 Topo
 5. In Pershing County, NV
- Legal Description - Mount Diablo Meridian
S1/2 of SE1/4 of NE1/4: S1/2 of SW1/4 of NE1/4:
NE1/4 of SE1/4: NW1/4 of SE1/4: NE1/4 of SW1/4